

Laboratory Chamber Oven 2kW / 2.45 GHz

Based on Solid State Microwave Technology

Application

Uniform and gentle drying/heat treatment of granulates

Generator

Type	Solid State
Power	4 x 500 W = 2 kW stepless adjustable in 1 W - steps
Frequency	2.40...2.50 GHz stepless adjustable in 1 MHz - steps
Supply voltage	3 x 400 V AC, 50 Hz
Total connected load	max. 6 kVA

Cooling

Water cooling

Cooling water flow rate	ca. 15 l/min.
Control	Monitoring of input temperature and water flow rate

Dimensions

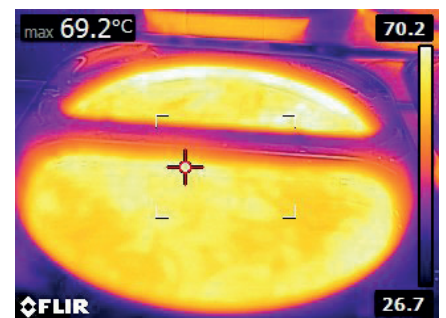
Inner dimension WxHxD	530 x 250 x 330 mm
Outer dimension WxHxD	865 x 1920 x 1275 mm
Weight	250 kg

Housing

Microwave chamber and oven cover made of stainless steel
Frame made of aluminium profiles

Equipment

Side IR camera to monitor product temperature
Chamber lighting
Exhaust ventilator
Air filter in the front side
Microwave Lab Oven with PLC Control



IR check of homogeneity



Chamber made of stainless steel