

# Laboratory Chamber Oven 2kW / 2400...2500 MHz

Based on Solid State Microwave Technology



## Application

Uniform and gentle drying/heat treatment of granulates

## Technical Data

Type	Solid State
Power	4 x 500 W = 2 kW stepless adjustable in 1 W - steps
Frequency	2400...2500 MHz stepless adjustable in 1 MHz - steps
Supply voltage	3 x 400 V AC, 50 Hz
Total connected load	max. 6 kVA

## Cooling

### Water cooling

Cooling water flow rate	ca. 15 l/min.
Control	Monitoring of input temperature and water flow rate

## Dimensions

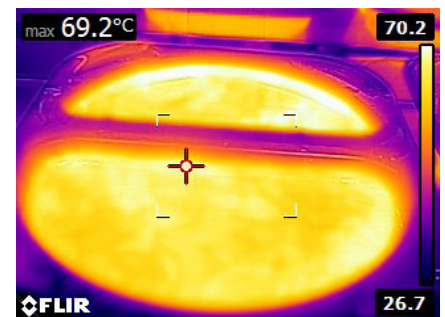
Inner dimension WxHxD	530 x 250 x 330 mm
Outer dimension WxHxD	865 x 1920 x 1275 mm
Weight	250 kg

## Housing

Microwave chamber and oven cover made of stainless steel  
Frame made of aluminium profiles

## Features

- Side IR camera to monitor product temperature
- Chamber lighting
- Exhaust ventilator
- Air filter in the front side
- Microwave Lab Oven with PLC Control



IR check of homogeneity



Chamber made of stainless steel