

# Hybrid Chamber Oven 24kW / 2445...2475 MHz

## Based on Magnetron Technology



### Application

Heating of plastics and silicone moulds for the Automotive Industry

### Technical Data

Type of Microwave Generator	Magnetronhead
Power	4 x 6kW = 24kW stepless adjustable in 1W - steps
Frequency	f = 2445...2475 MHz
Supply voltage	3x 400 V <sub>AC</sub> 50 Hz
Total connected load	max. 51 kVA

### Cooling

#### Water cooling

Cooling water flow rate	ca. 40 l/min.
Water Temperature	19° - 25° C
Control	Monitoring of water flow rate

### Dimensions

Inner dimension WxDxH	1200 x 1200 x 800 mm
Outer dimension WxDxH	2200 x 2000 x 2600 mm
Allowed maximum loading	max. 600 kg

### Housing

Microwave chamber and oven cover made of stainless steel  
Frame made of aluminium profiles

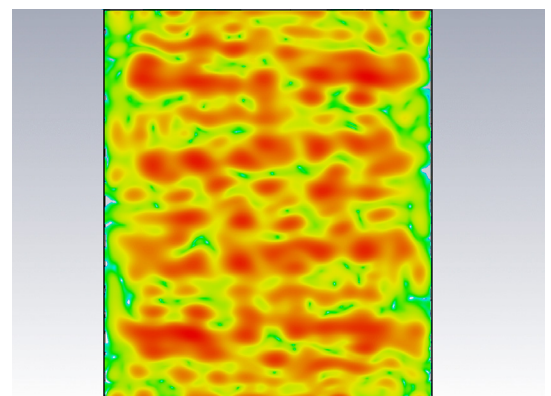
### Features

- Circulating air heating up to 160° C
- 4 x 6kW switch mode power supplies with Profinet communication
- 4 x 6kW Microwave Generator Heads with ARC Detection and Magnetron Temperature Monitoring
- 2 side-mounted air heaters each with 4.5 kW (up to 160°C)
- Electric door with safety edge
- Microwave traps for secure protection against microwave radiation
- 7" Key-Touchpanel
- IR Camera with 10 measurement fields



PLC Monitoring

IR Monitoring



Simulation of fieldpattern