

Microwave Chamber Dryer 6 kW / 2445..2475 MHz

Based on Magnetron Technology



Application

Rapid heating of mineral fiber pads \varnothing 100 mm, height 12-30 mm (wet weight 43-150 g) in approx. 90 sec.

Technical Data

Type	Magnetronhead
Microwave Power	6 kW
Frequency	2445..2475 MHz
Supply voltage	3 x 400 V AC, 50 Hz
Total connected load	max. 10.5 kVA

Cooling

Water cooling

Cooling water flow rate	ca. 20-25 l/min., 4 bar
Control	Monitoring of input temperature and water flow rate

Dimensions

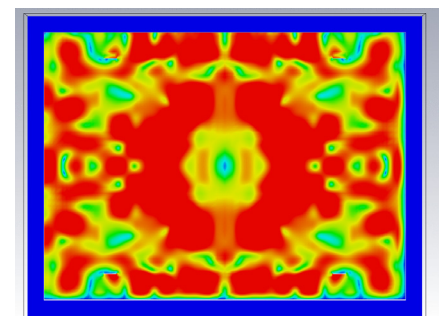
Inner dimension WxHxD	416 x 168 x 300 mm
Outer dimension WxHxD	1555 x 1761 x 890 mm
Weight	ca. 300 kg

Housing

Microwave chamber and front door made of aluminium
Frame made of aluminium profiles

Features

- Microwave power control according to temperature and/or weight
- Multifunctional and flexible weighing module with modern automation system, integrated in PLC
- IR temperature measurement
- Exhaust system
- PLC control with Touch Panel
- Connection for pumpable material



Simulation of power flow



IR-Picture of the heated pads